

## Use Paint.NET to make a wall light effect.

© Of Yellowman

El uso de plug-in pyjo Powerstretch para obtener la forma,  
Use pyjo's [PowerStretch](#) plugin to get the shape,

Plugins adicionales utilizados:

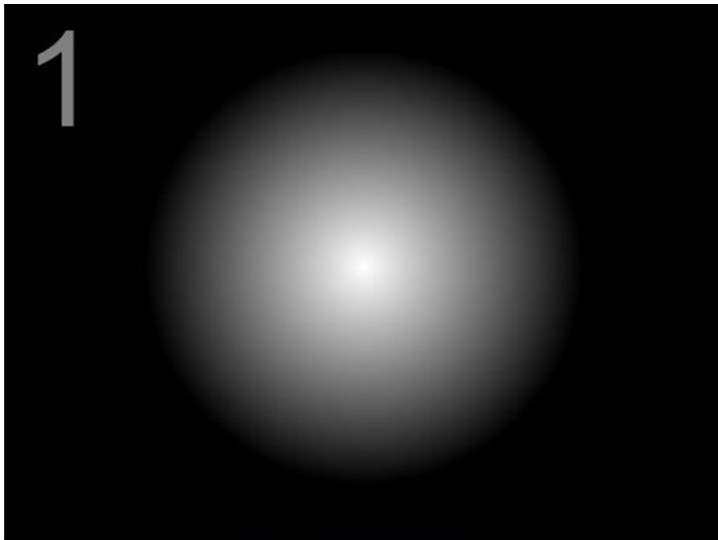
Additional plugins used:

- 1-Power Stretch
- 2-Perspective
- 3-Zoom Blur Deluxe
- 4-BlendsMode Plus

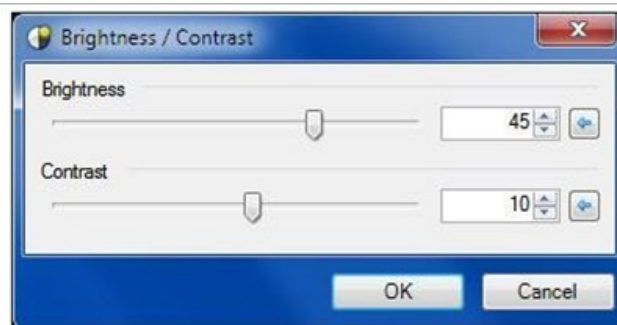
See the main steps:

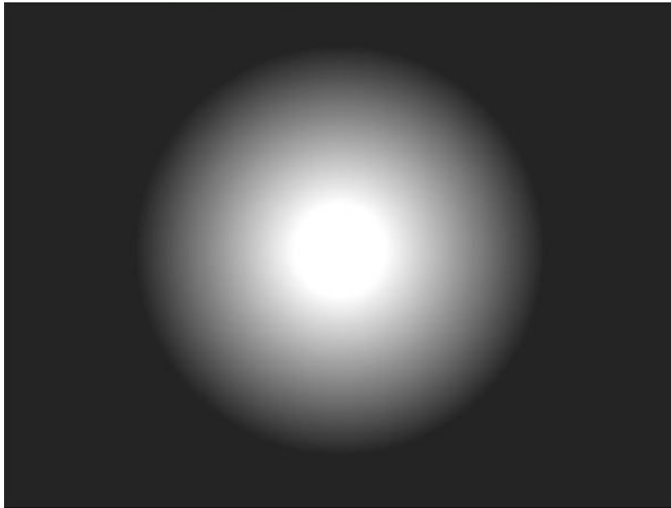
Video Tutorial en:

<http://youtu.be/iJcbp0W423M> por Yellowman by Member of Saint.Net

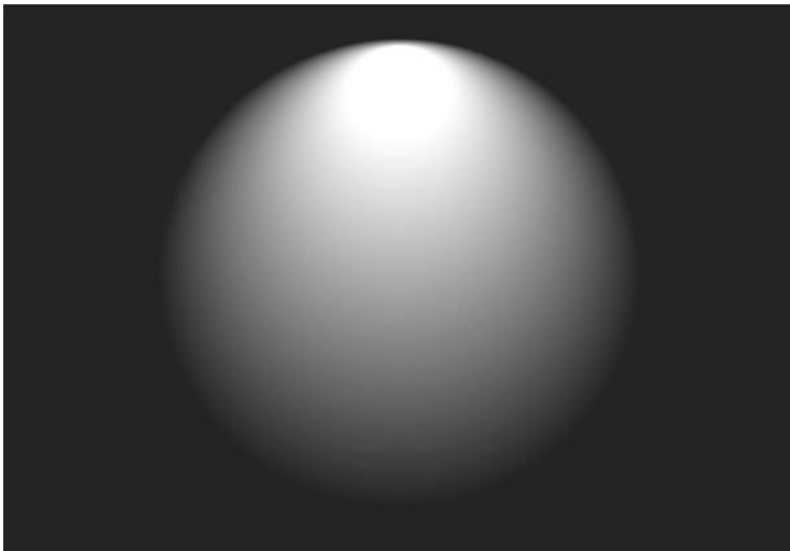
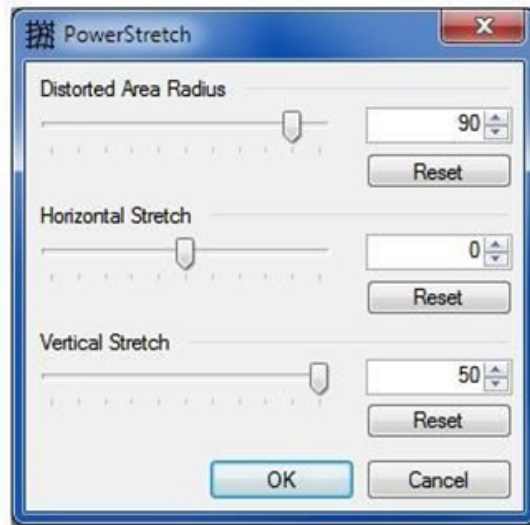


2

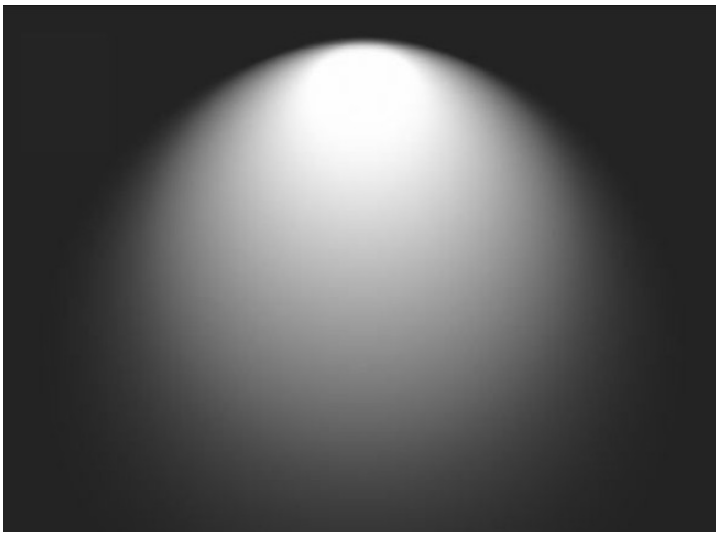
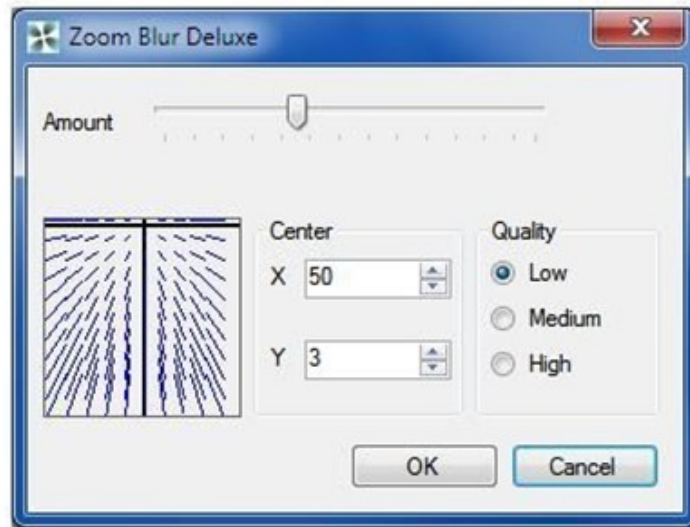




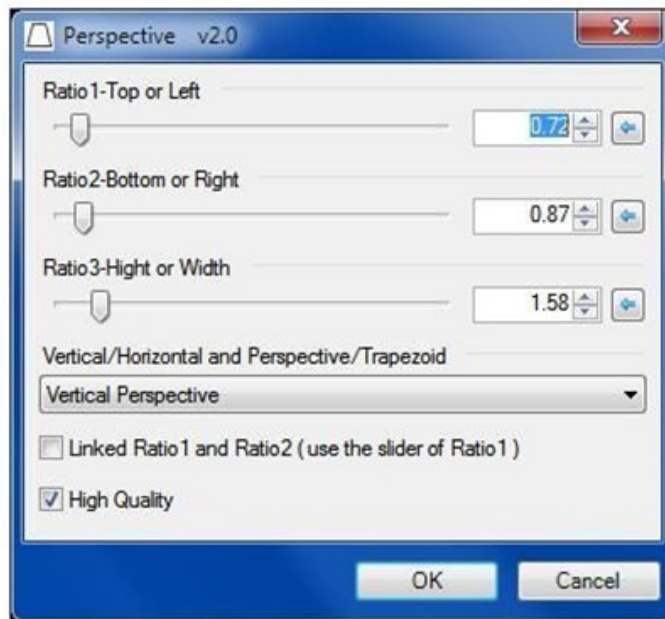
3



4

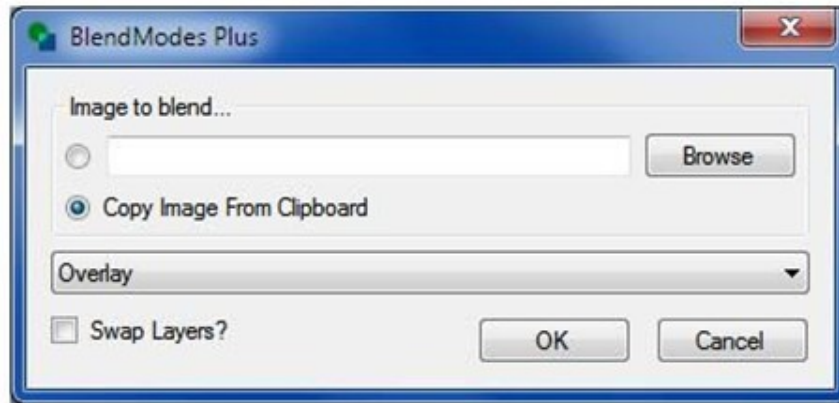


5





6



7